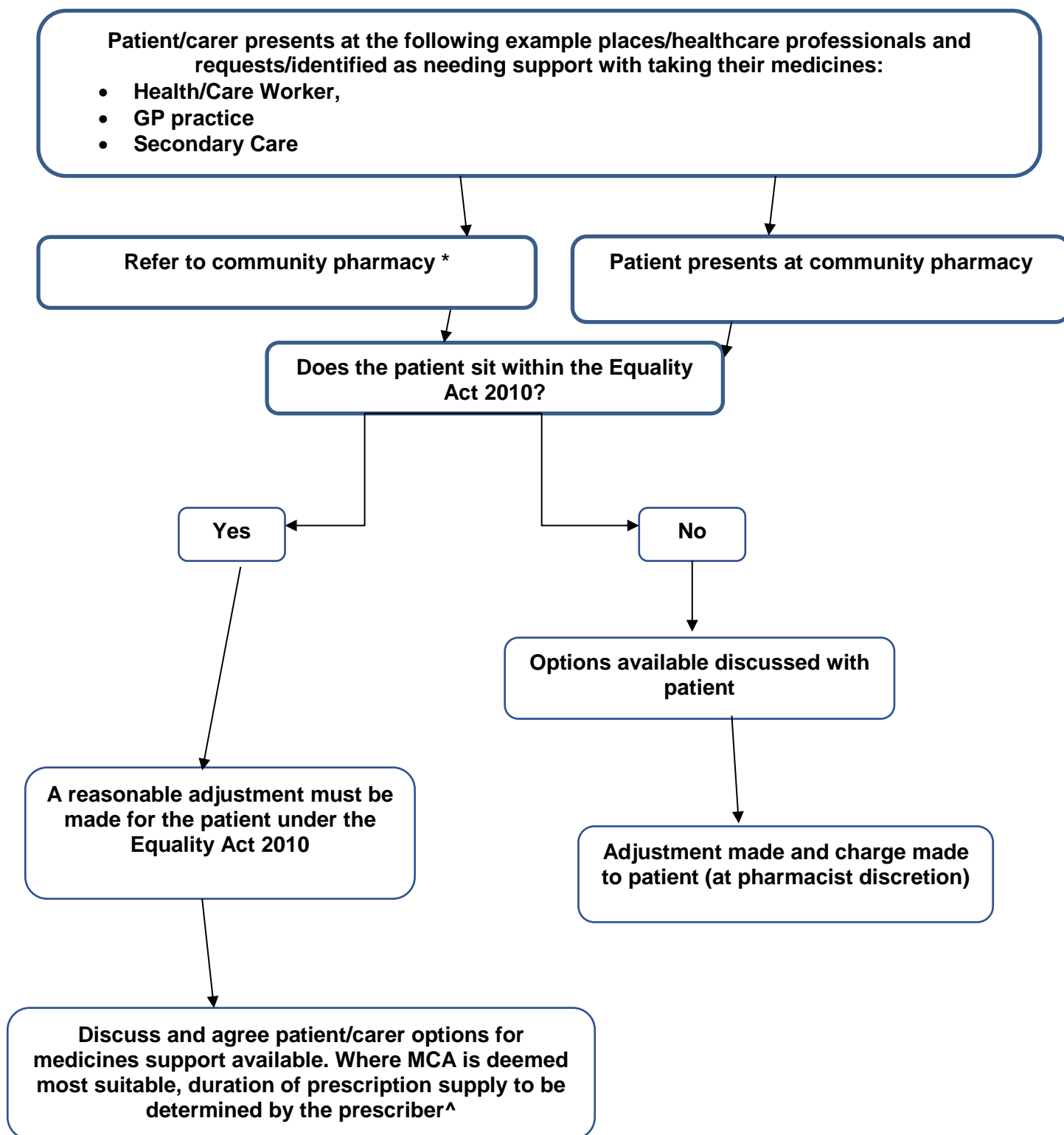


## Managing Patients and Reasonable Adjustment for Medicines Flowchart



*\*It is the dispensing pharmacist's responsibility to determine an appropriate aid for the patient. The dispensing pharmacy may choose to accept an assessment done by secondary, community or primary care but should not be put under any undue pressure to accept this if it is not appropriate in their clinical opinion.*

*<sup>^</sup>It is the prescriber's responsibility to prescribe for the patient in an appropriate quantity which is independent of the aid provided unless the stability of the medication is a problem and the decision should be based on the individual patient requirements. The prescriber may choose to accept advice and information from other health and care colleagues to inform their decision around prescription duration i.e. if an MCA is appropriate and the medication isn't stable. [See Decision Aid for Appropriate Prescription Duration.](#)*